

### PRODUCT SPECIFICATIONS

Elkay Enhanced Filtration Bottle Filling Station & Single ADA Cooler Refrigerated High-Capacity Lead Reduction Faster Filter Changes. Chilling capacity of 8.0 GPH (gallons per hour) of 50° F drinking water, based on 80° F inlet water and 90°F ambient, per ASHRAE 18 testing. Features include Faster Filter Changes: Automatic Hands-Free Reset, Visual Filter Monitor, Automatic Filter Recognition, and Easy Access Drop Down Wrapper, Connected Ready Device, Hands Free Bottle Filler, Energy Savings, Green Ticker™, Alcove Light, Laminar Flow, and Real Drain included. Furnished with Flexi-Guard® Safety Bubbler, Antimicrobial Material\*, Electronic Bottle Filler Sensor with Electronic Front and Side Bubbler Pushbar activation. Product shall be Wall Mount (On Wall), for indoor applications, serving 1-2 station (s). Unit shall be certified to UL 399 and CAN/CSA C22.2 No. 120.

<b>Special Features:</b>	Automatic Hands-Free Reset, Visual Filter Monitor (Blue LED Indicator), Automatic Filter Recognition, Easy Access Drop Down Wrapper, Connected Ready Device, Hands Free Bottle Filler, Energy Savings, Green Ticker™, Alcove Light, Laminar Flow, Real Drain
<b>Finish:</b>	Midnight Black
<b>Power:</b>	115V/60Hz
<b>Bubbler Style:</b>	Flexi-Guard® Safety Bubbler
<b>Activation by:</b>	Electronic Bottle Filler Sensor with Electronic Front and Side Bubbler Pushbar
<b>Mounting Type:</b>	Wall Mount (On Wall)
<b>Chilling Capacity*:</b>	8.0 GPH
<b>Full Load Amps</b>	5
<b>Rated Watts:</b>	370
<b>Dimensions (L x W x H):</b>	18-3/8" x 19" x 39-7/16"
<b>Approx. Shipping Weight:</b>	85 lbs.
<b>Installation Location:</b>	Indoor
<b>No. of Stations Served:</b>	1
*Based on 80° F inlet water & 90° F ambient air temp for 50° F chilled drinking water.	

#### Special Note: One-Box Packaging.

- Intuitive Filter Status: LED filter status indicator alerts to needed filter change; simplified blue & red light indicator with no more confusing yellow lights
- Connected Capable: Campuses and large complexes can reduce their total cost of ownership with free access to plumbSMART tracking bottles saved, filter status and water usage, and schedule flushing events to help keep lines cleaner (available on -W1 models only; other models require retrofit upgrade).

PART: \_\_\_\_\_ QTY: \_\_\_\_\_  
 PROJECT: \_\_\_\_\_  
 CONTACT: \_\_\_\_\_  
 DATE: \_\_\_\_\_  
 NOTES: \_\_\_\_\_  
 APPROVAL: \_\_\_\_\_



**Included with Product:** Bottle Filler, Water Cooler, Filter

#### Ships in one box.

A Century of Tradition and Quality. For more than 100 years, Elkay has been making innovative products and providing exceptional customer care. We take pride in offering plumbing products that make life easier, inspire change and leave the world a better place.



#### PRODUCT COMPLIANCE

ADA & ICC A117.1  
 ASME A112.19.3/CSA B45.4  
 CAN/CSA C22.2 No. 120  
 FCC & ISED  
 NSF/ANSI 42, 53, 61 (Q≤1), 372 (lead free), & 401  
 UL 399



Complies with ADA & ICC A117.1 accessibility requirements when installed according to the requirements outlined in these standards. Installation may require additional components and/or construction features to be fully compliant. Consult the local Authority Having Jurisdiction if necessary.

[Installation Instructions \(PDF\) - 2000001214](#)

**5 Year Limited Warranty** on the refrigeration system of the unit. Electrical components and water system are warranted for 12 months from date of installation. **Warranty pertains to drinking water applications only. Non-drinking water applications are not covered under warranty.**

[Warranty \(PDF\)](#)

*In keeping with our policy of continuing product improvement, Elkay reserves the right to change product specifications without notice. Please visit [elkay.com](http://elkay.com) for the most current version of Elkay product specification sheets. This specification describes an Elkay product with design, quality, and functional benefits to the user. When making a comparison of other producers' offerings, be certain these features are not overlooked.*





- High-capacity filter included: Elkay's 6,000 gallon filter is tested and certified to NSF/ANSI 42, 53, 372, and 401 to reduce lead, microplastics, cysts, class 1 particulates, and chlorine taste and odor.
- PFAS Filter option: 2,250-gallon filter tested and certified to NSF/ANSI 42, 53, 372 and 401 to reduce two prevalent PFAS chemicals (PFOA and PFOS), lead, microplastics, cysts, class 1 particulates, and chlorine taste and odor.
- Faster Filter Changes: Quick filter change wrapper provides easy access to filter from the front and side of cooler for efficient filter changes in under a minute.
- Filter Authentication: System recognizes Elkay filter installed and automatically resets LED filter status indicator.
- Green Ticker™ informs user of number of 20 oz. plastic water bottles saved from waste.
- Flexi-Guard bubbler provides a flexible antimicrobial mouth guard that protects against injury and microorganisms from growing on it.
- Programmable energy-savings mode reduces energy consumption.
- LED lighting: Low-energy LED light encourages use, assists with filling dark bottles and illuminates in dark hallways.
- Fill rate is 1.1 GPM: Laminar flow provides clean fill with minimal splash. Real drain system eliminates standing water in basin.
- Key plastic components are manufactured with silver ion antimicrobial agent helping to provide clean, stain- and odor-free surfaces.
- One-box packaging so the cooler and bottle filler ship together.

**COOLING SYSTEM**

- Compressor: Hermetically-sealed, reciprocating type, single phase. Sealed-in lifetime lubrication.
- Condenser: Fan cooled, copper tube with aluminum fins. Fan motor is permanently lubricated.
- Cooling Unit: Combination tube-tank type. Continuous copper tubing with is fully insulated with EPS foam that meets UL requirements for self-extinguishing material.
- Refrigerant Control: Refrigerant R-134a is controlled by accurately calibrated capillary tube.
- Temperature Control: Easily accessible enclosed adjustable thermostat is factory preset. Requires no adjustment other than for altitude requirements.

*In keeping with our policy of continuing product improvement, Elkay reserves the right to change product specifications without notice. Please visit [elkay.com](http://elkay.com) for the most current version of Elkay product specification sheets. This specification describes an Elkay product with design, quality, and functional benefits to the user. When making a comparison of other producers' offerings, be certain these features are not overlooked.*

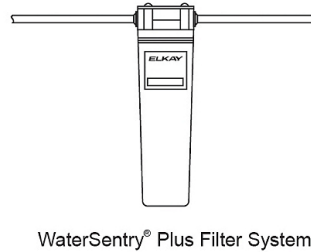
Upgrades		
Connected Enabled (-W1)	Gain access to the plumbSMART® network to remotely monitor filter status, gallons dispensed, solenoid activation count, bottle saved count, and schedule automatic line flushing events	LZS8WSMP-W1
PFAS Reduction (-PF)	Gain cleaner drinking water with a 2,250-gallon filter, tested and certified to reduce lead and other contaminants, such as PFOA and PFOS – two prevalent PFAS chemicals that can cause negative health images in both adults and children	LZS8WSMP-PF

Optional Accessories		
<a href="#">51600C</a>	WaterSentry® Lead + Microplastics NSF/ANSI Certified High-Capacity Filter (Enhanced Bottle Fillers) <a href="#">Spec Sheet (PDF)</a>	
<a href="#">71300C</a>	WaterSentry® PFOA/PFOS (PFAS) + Lead + Microplastics NSF/ANSI Certified Filter (Enhanced Bottle Fillers) <a href="#">Spec Sheet (PDF)</a>	
LKAPREZM	Elkay Cane Apron for Midnight Black <a href="#">Spec Sheet (PDF)</a> (Gray)	Image Not Available
<a href="#">MLP100</a>	In-wall Carrier for Single-station On-wall Bottle Fillers Coolers & Fountains <a href="#">Spec Sheet (PDF)</a>	
<a href="#">1000004833</a>	Stainless Steel Back Panel for Single EZ Bottle Filling Station <a href="#">Spec Sheet (PDF)</a>	

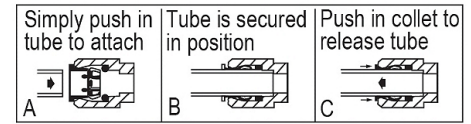
*In keeping with our policy of continuing product improvement, Elkay reserves the right to change product specifications without notice. Please visit [elkay.com](http://elkay.com) for the most current version of Elkay product specification sheets. This specification describes an Elkay product with design, quality, and functional benefits to the user. When making a comparison of other producers' offerings, be certain these features are not overlooked.*

### IMPORTANT! INSTALLER PLEASE NOTE:

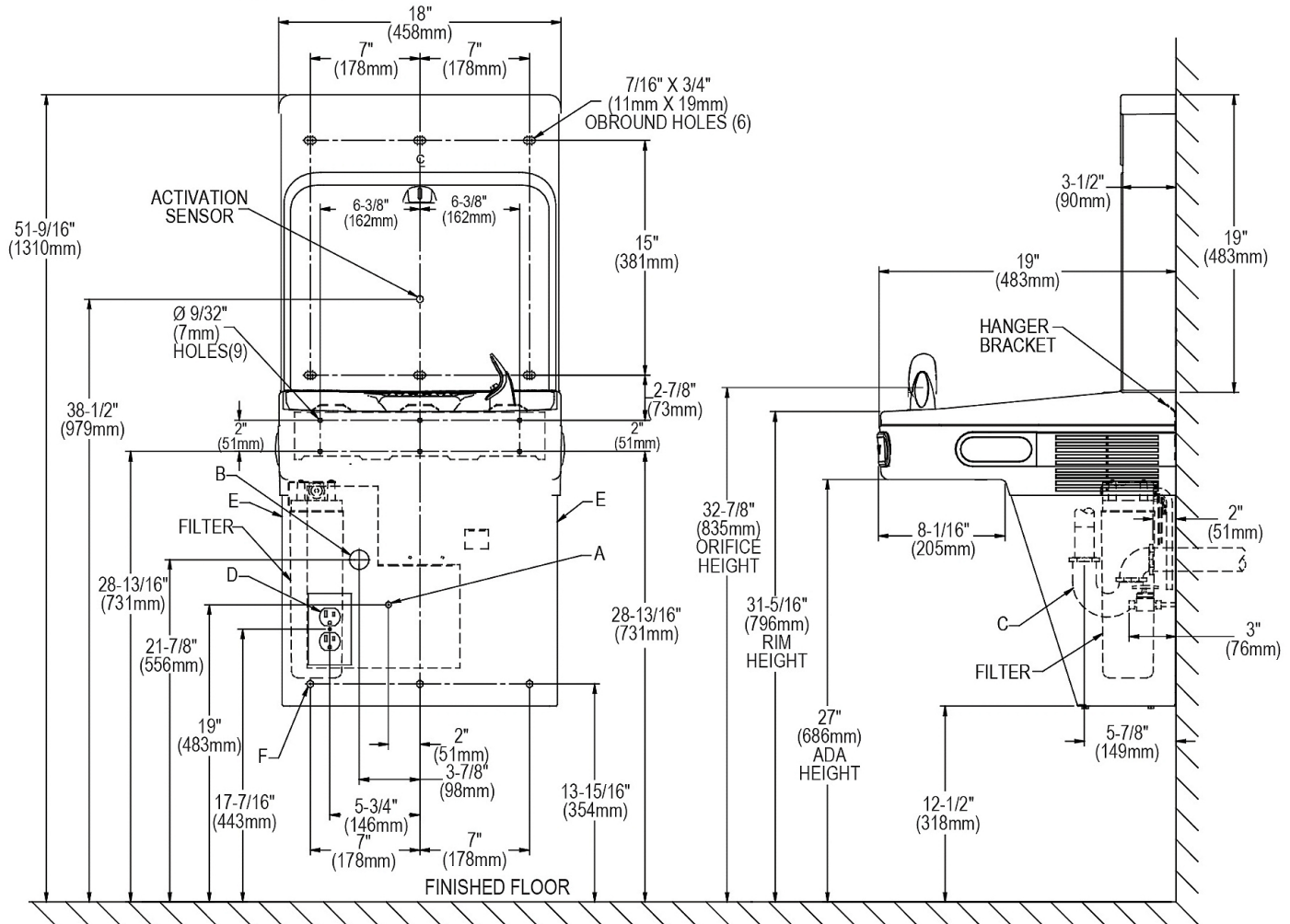
The grounding of electrical equipment such as telephone, computers, etc., to water lines is a common procedure. This grounding may be in the building or may occur away from the building. This grounding can cause electrical feedback into a water cooler, creating an electrolysis which causes a metallic taste or causes an increase in the metal content of the water. This condition is avoidable by using the proper materials as indicated below. The drain fittings which are provided by the installer should also be plastic to electrically isolate the cooler from the building plumbing system.



### OPERATION OF QUICK CONNECT FITTINGS



Pushing tube in before pulling it out helps to release tube



REDUCE HEIGHT BY 3 INCHES FOR INSTALLATION OF CHILDRENS ADA COOLER

### LEGEND:

- A = Recommended Water Supply location. Shut-off Valve (not furnished) to accept 3/8" O.D. unplated copper tube. Up to 3" (76mm) maximum out from wall.
- B = Recommended Waste Outlet location. To accommodate 1-1/4" nominal drain. Drain stub 2" (51mm) out from wall.
- C = 1-1/4" Trap (not furnished).
- D = Electrical Supply (3) Wire Recessed Box Duplex Outlet.
- E = Insure proper ventilation by maintaining 6" (152mm) minimum clearance from cabinet louvers to wall.
- F = 7/16" (11mm) Bolt Holes for fastening to wall.

Note : New Installations Must Use Ground Fault Circuit Interrupter (GFCI).

In keeping with our policy of continuing product improvement, Elkay reserves the right to change product specifications without notice. Please visit [elkay.com](http://elkay.com) for the most current version of Elkay product specification sheets. This specification describes an Elkay product with design, quality, and functional benefits to the user. When making a comparison of other producers' offerings, be certain these features are not overlooked.