

FAQs



SKU: LZS8WSBPRO

General Product Information

What makes Pro Filtration different from standard Elkay bottle fillers?

Pro Filtration revolutionizes the bottle filler experience with four key innovations:

- Top-access filter design allowing filter changes in under 30 seconds
- Industry-leading 10,000-gallon filter capacity
- Optional UVC LED technology
- Also features a blue filter indicator light for clear visual confirmation of filtration status

When will Pro Filtration units be available?

Pre-orders and quotations are available now. Units will ship starting July 1, 2025. Contact your Elkay representative for regional availability.

How is Pro Filtration different from other manufacturers?

Advantages include:

- 3x greater filter capacity (10,000 gallons vs. 3,000 gallons)
- Faster, easier filter access with top-access design
- Premium design aesthetics

What configurations are available?

Available in single and bi-level units, customizable with:

- Standard 10,000-gallon Ultra Capacity Lead filter (included)
- Total PFAS¹ filter for enhanced PFAS reduction²
- Sediment filter for improved water clarity and extended filter life³
- UVC LED at the dispense point⁴

What colors/materials are available?

Durable stainless steel construction, including the bottle filler, basin, and alcove, ensuring long-lasting performance in high-traffic environments. Available in Midnight Black finish. More colors will be available soon.

Is there a non-refrigerated version?

No, all Pro Filtration units currently include integrated cooling. Non-refrigerated options will be introduced later.

¹ Total PFAS as defined by NSF/ANSI 53

²⁻⁴ Optional

Installation & Compatibility

Does Pro Filtration fit the same footprint as standard Elkay fillers?

Yes, it uses the same rough-in and plumbing, perfect for new installs or retrofits.

Are bi-level configurations available?

Yes, with traditional left high/right low (LZSTL)

Are bi-level configurations versatile?

Yes, it requires adding a modification in the field: P/N VERSATILEBKITPRO (Cable Extension for Versatile Pro Bottle Filler)

Can the filter housing be purchased separately and added to standard units?

No, the top-access filter design is integrated and not retrofit-compatible.

Can Pro Filtration smart tech integrate with Building Automation Systems (BAS)?

Yes, all Pro Filtration units are compatible with our patented plumbSMART™ system which supports integration with most modern BAS systems. Available data includes filter status, device usage, water consumption, maintenance alerts and more, across multiple units. This model requires a Connected Endpoint Board⁵ that can be added in the field in minutes: P/N 1100000026 (Pro Endpoint Connected Kit)

What does smart connectivity monitor?

Connected models include smart technology that provides a centralized view of filter life, water usage, and vital system performance information that can be accessed remotely and securely through plumbSMART. You'll receive timely notifications for filter replacements and other maintenance and can track your water consumption habits. This data allows you to easily organize filter changes and anticipate issues before they become problems. Additionally, you can remotely configure, execute and document remote line flushing schedules to support water safety management plans across your drinking water fleet.

Is there an extra cost or setup for smart capabilities?

There is no additional cost for standard plumbSMART access. Startup assistance and training is available through our Customer Success team at zurnconnectedproducts@zurn.com. A gateway is required (ZGW-LORA-W1-LTE). Nominal cellular data usage fees apply to LTE gateways. As stated above, P/N 1100000026 (Pro Endpoint Connected Kit) will be required with this iteration of Pro Filtration.



Filter SKUs: FLP4, FL6, FL10 and FSR5

Filtration Technology

What filter options are available?

- **FL10** = 10,000-gallon Ultra Capacity lead filter (standard)
- **FL6** = 6,000-gallon High Capacity lead filter (replacement option)
- **FLP4** = 4,000-gallon Total PFAS + lead filter (upgrade option)
- **FSR5** = Sediment Prefilter (upgrade option)

Can I switch filter types when replacing?

Yes. All filters are interchangeable for replacement.

Exception: The FSR5 is not a replacement for a contaminant-reducing filter.

⁵ Models launching at the end of the year will all include plumbSMART connectivity out of the factory; no retrofit kit required.



Are Pro Filtration filters compatible with previous Elkay units?

No, Pro Filtration filters are not compatible with older units and vice versa.

Is the sediment prefilter required?

The sediment prefilter does NOT need to be selected at purchase, but it's best when it is.

When is a sediment prefilter recommended?

Intended in areas where dirt and sand are present in the water supply

Recommended to:

- Protect your filter
- Preserve your system
- Keep your flow rates strong

Can a sediment filter be added later if not ordered initially?

Yes. The optional Stage 1 Sediment Prefilter can be added and programmed in the field. Part number: 1100000031

How do I know when to change the filter?

Indicators include:

- Red LED
- plumbSMART™ remote alerts (if enabled)

What if I don't replace a sediment filter?

Sediment Prefilters should be changed along with the main contaminant reducing filter or if you notice a flow rate reduction. Flow rate reduction is likely due to sediment build-up within the prefilter.

Can the filter be bypassed?

No, filters must be installed for proper operation.

How much PFAS reduction does the FLP4 filter provide?

The FLP4 filter is certified to NSF/ANSI 53 for Total PFAS reduction, effectively reducing PFAS substances to below 20 ppt.

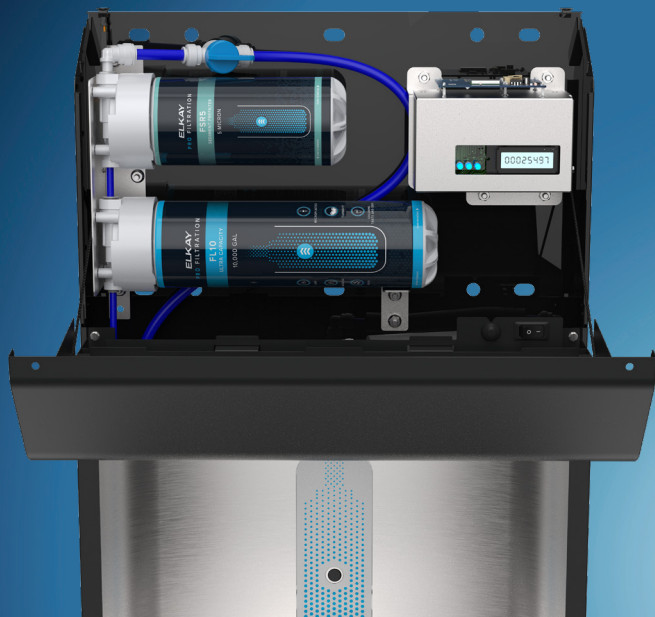
Why do third-party certifications matter?

Certifications provide independent verification of filter performance under rigorous conditions, offering reliable assurance beyond manufacturer claims.

Aren't all bottle fillers filtered?

No, many lack filtration or offer only optional filters. Pro Filtration delivers top-tier certified contaminant removal, including optional PFAS reduction.





Maintenance & Operation

How is the filter accessed?

Via the top-access design: open the panel, rotate the filter a quarter turn, and replace in under 30 seconds.

Are tools needed for filter changes?

Yes, a standard T25 Security Torx Bit is required, preventing vandalism but easy to source.

Does the unit retain bottle count during power loss?

Yes, non-volatile memory preserves count data through outages.

How much do replacement filters cost?

Prices vary by model and quantity. The FL10 offers excellent value with 3x more capacity than competitors. Contact Elkay for details.

What is the expected lifespan of Pro Filtration units?

Designed for 10+ years with proper maintenance. Includes a 5-year limited warranty on refrigeration and 1-year on electrical and water systems.

UV

Is the UVC module replaceable?

Yes.

When does the UVC module need to be serviced?

The UV unit life is 10,000 hours and should be serviced. Given normal use the UV would need to be replaced after 8 to 10 years of service.



Sustainability & Environmental Impact

Where are Pro Filtration bottle fillers manufactured?

Engineered and manufactured in the USA.

Are Environmental Product Declarations (EPDs) available?

We are currently in the process of developing certified EPDs for these products.

Value Proposition

Why upgrade to Pro Filtration?

- Maintenance efficiency: 30-second filter changes, 3x longer filter life
- Superior water quality: Certified reduction of lead, Total PFAS, microplastics, and more
- Premium aesthetics: Modern Midnight Black with stainless steel alcove

How does pricing compare?

Initial cost is 10-15% higher than standard models, but total ownership cost is lower due to maintenance savings. Contact Elkay for pricing.

Is there a residential model?

No, Pro Filtration is for commercial/institutional use. For homes, consider an Avado Filtered Faucet, Liv or Liv EZ.



Schedule an
assessment today
elkay.com/profiltration

