

# Filtration Reimagined

In a world of rising water quality concerns, Elkay leads the clean water revolution. Elkay Pro Filtration™ bottle filling stations deliver superior water protection while making filter maintenance remarkably simple.

With breakthrough technology removing more contaminants than standard systems, these architecturally stunning units transform spaces into wellness hubs. Featuring ergonomic top-access filter changes and the longest-lasting filters on the market. See why institutions everywhere are upgrading to exceptional water quality and simplified maintenance.



SKU: LZS8WSBPRO

## Superior Protection

Experience industry-defying filtration technology that sets the gold standard with unmatched capacity and superior contaminant removal power.



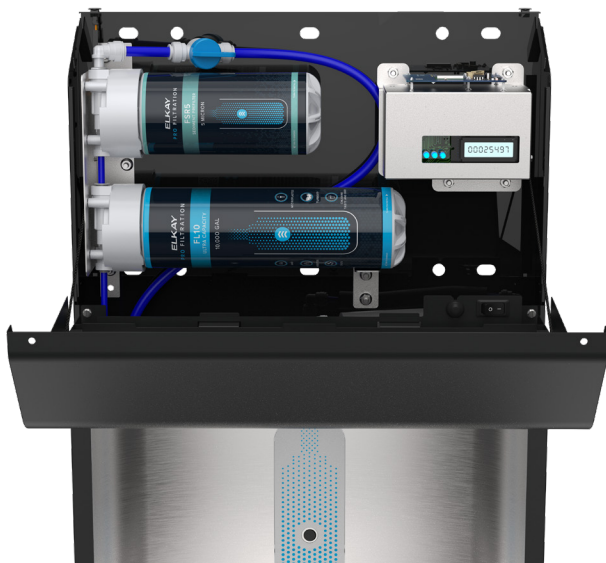
- ✓ Ultra-capacity lead filter lasts up to 10,000 gallons (standard with base models)
- ✓ High-capacity 6,000-gallon lead filter for medium to high-traffic areas
- ✓ NSF/ANSI 42, 53, 372 and 401 certified to reduce Total PFAS\*, lead, microplastics, asbestos and more
- ✓ Optional stage 1 sediment filter for optimal performance in high-sediment areas
- ✓ Optional UV technology

*\*This system has been certified by IAPMO R&T and tested according to NSF/ANSI 42, 53, 372 and 401 for the reduction these substances*

[elkay.com/profiltration](https://elkay.com/profiltration)

## Innovation From the Brand You Trust

Experience the award-winning Elkay bottle filling station reimagined with modern design and enhanced efficiency—delivering the same trusted reliability. Available in striking Midnight Black with a durable stainless steel alcove.



## Maintenance Redefined

- ✓ Change filters from the top in under 30 seconds
- ✓ Blue LED status clearly indicates filter life
- ✓ Automatic flushing of new filters
- ✓ Remote monitoring across your entire campus with built in smart connectivity

SKU: LZS8WSBPRO, Filter SKUS: FSR5 and FL10

## Sustainability Realized

With just 15 bottle filling stations, save 1,890,000 plastic bottles—equivalent to 89,200 lbs of waste—while meeting environmental objectives.

Take a closer look at  
[elkay.com/profiltration](https://elkay.com/profiltration)

