



## INSTALLATION / OWNER'S MANUAL

Single Handle Kitchen Faucet

Model # LKEC2031

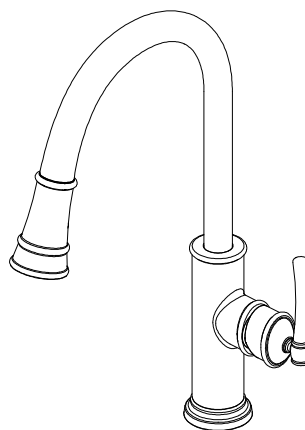
### Important!

#### You choose the flow rate!

This faucet ships with an eco-friendly 1.5GPM flow regulator installed.

If you desire higher flow rate, a 2.2GPM flow regulator has also been included in the box.

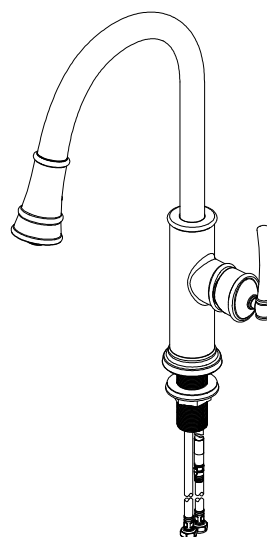
Switching the flow regulator is simple! See the "Flow Regulator Replacement" section for details.



### INCLUDES:



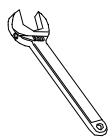
OPTIONAL 2.2GPM FLOW  
REGULATOR



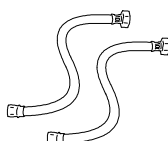
### RECOMMENDED TOOLS:



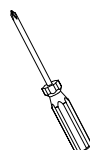
Groove joint pliers



Wrench



(2) 1/2 in Supply Lines



Screwdriver



Sealant Tape

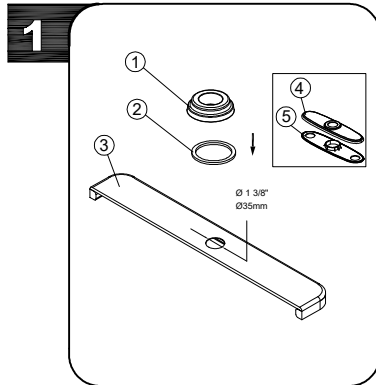


Plumber's Putty

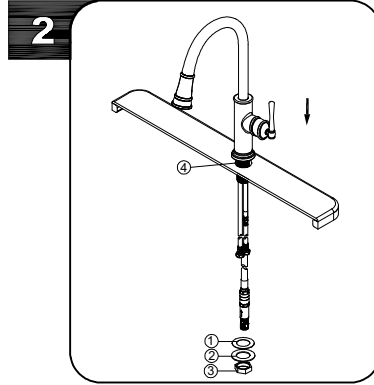
**SAVE FOR CONSUMER**

**WARNING:** Please carefully read and properly follow the instructions for installation found in this manual.

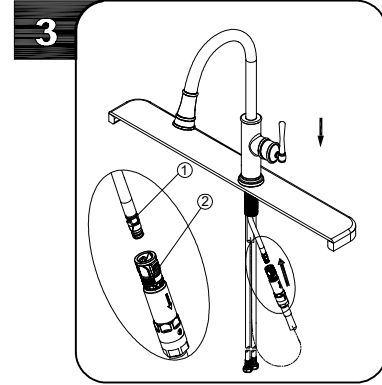
## STEPS:



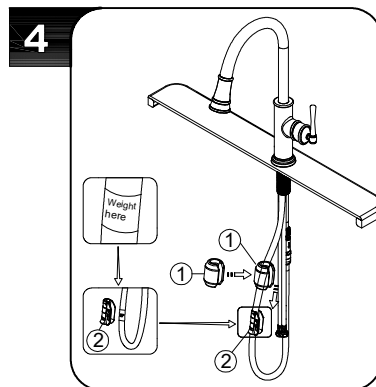
Shut off water supplies. Clean sink surface. Place washer(2) and flange(1) on the sink(3). If you do not use flange, please use escutcheon(4) and gasket(5) to replace flange and washer.



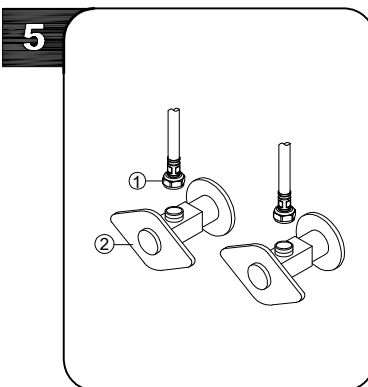
Place faucet through the hole in top of sink. From underside, assemble rubber washer (1), metal washer (2) and nut (3) onto long shank (4) and tighten nut (3). Firmly tighten the nut (3) to metal washer (2). Do not overtighten.



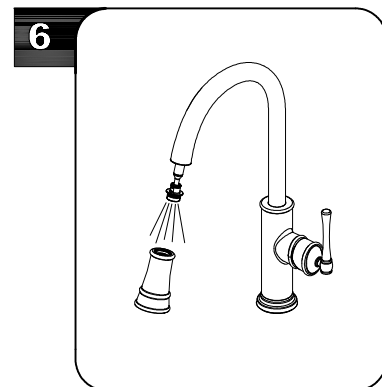
From underneath the sink, align block(1) and tabs (2) on quick connects. Push quick connect housing firmly upward and snap onto receiving block. Pull down moderately to ensure connection has been made. If it is necessary to remove quick connect, squeeze tabs on hose between index finger and thumb, then pull down to disconnect.



Install the weight clip (2) at the point of the hose marking "Weight here". Insert the weight (1) onto the clip (2) by sliding it down onto the clip (2).



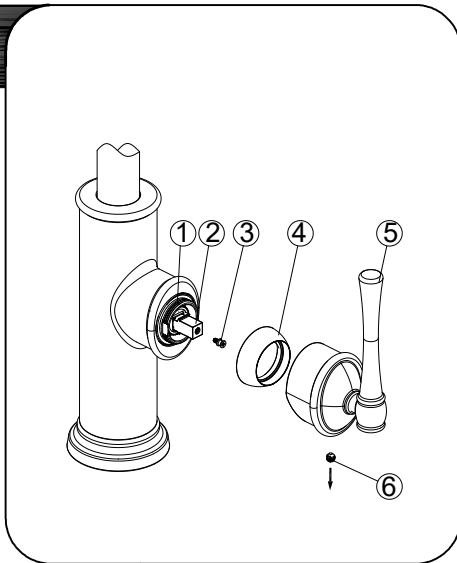
Make connections to water lines. Thread the nut (1) on the supply line onto the outlet of the water supply valve (2) and tighten with a wrench. Do not overtighten.



Important: after installation is completed, turn on hot and cold water supplies. Pull the hose assembly out of the spout and remove the spray head by unscrewing it from the hose counterclockwise. Be sure to hold the end of the hose down into the sink and turn the faucet on to the warm position where it mixes hot and cold water. Flush water lines for one minute. Check for leaks. Re-tighten any connections if necessary, but do not overtighten. Reinstall spray head by hand tightening it back onto the spray hose.

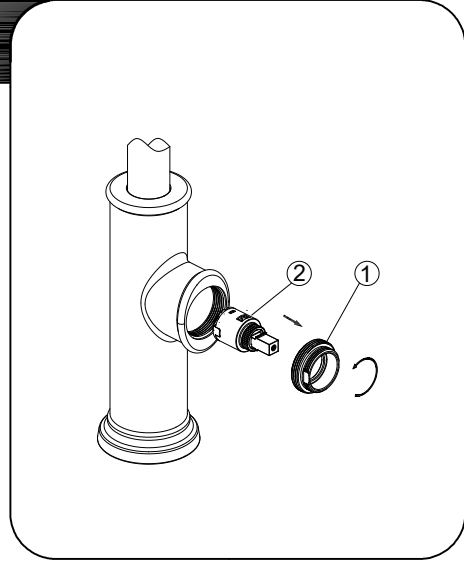
## CARTRIDGE REPLACEMENT

1



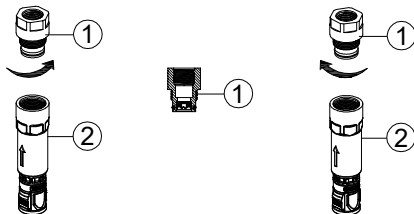
Shut off water supply! .With valves in "closed" position, unscrew fastener(6) and remove handle(5) from valve stem(2). Loosen the screw(3) from valve stem(2). Loosen the cap(4) from the sleeve(1).

2



Loosen sleeve(1) by turning it counter-clockwise and lift out the cartridge(2). Position the cartridge back to the faucet body and retighten the cartridge nut. Reinstall the handle.

## FLOW REGULATOR REPLACEMENT



The faucet ships with a 1.5GPM aerator installed. An optional 2.2 GPM aerator is also included in the box. To switch the flow rate of the faucet:  
1. Disassemble the quick connect assembly by separating the connector ① and quick connect ②.  
2. Replace 1.5 GPM connector(green) with the 2.2GPM connector.  
3. Reinstall quick connect assembly.

## CARE AND CLEANING INSTRUCTIONS

Congratulations on your purchase of an Elkay product. Although your product is extremely durable, attention should be given to the care, cleaning and maintenance of this product. Cleaning agents and abrasives may cause damage, which may result in oxidation and discoloration.

By following these simple guidelines for proper care and cleaning, it will give you years of enjoyment:

TO CLEAN: Simply wipe gently with a damp cloth and blot dry with a soft towel. A common rule of thumb is: when you dry off, dry off your product.

- Avoid build-up of soap, toothpaste or mineral deposits, as these tend to have an adverse effect on the appearance of the product.
- NEVER use cleaning products of any kind on this product - especially those containing ammonia, bleach or alcohol - or those with any form of abrasive.

### FOR CARE AND MAINTENANCE:

- The water in certain areas of the world can be very caustic - standing water around the product can cause damage. Be sure to remove standing water with a dry, soft cloth as soon as possible.
- For polished brass finishes, as often as once a week, you can apply a paste wax or special, non-abrasive, brass coating (DO NOT APPLY POLISH).
- Before applying a protective coating, gently brush the entire fixture using a soft tooth brush. This will remove any dirt or deposit build-up.
- These simple steps will add temporary protective coating to your faucet and extend the life of the finish.

Failure to follow care and cleaning will void your warranty. For additional information, please visit [elkayusa.com](http://elkayusa.com).

## ELKAY LIMITED LIFETIME WARRANTY

1. Damage caused by accident, negligence, misuse, abuse, improper installation or operation or failure to follow care or installation instructions enclosed with your product.
2. Damage occurring during shipment of the product (claims must be presented to the carrier).
3. Normal wear and tear.
4. Labor charges, costs of removal and reinstallation, and any damages to other property.
5. All industrial, commercial and business use whose purchasers are hereby extended a limited lifetime on mechanical parts and 5 years on finish.

This warranty covers product installed in the United States and Canada.

Diagram illustrating the assembly components for a hand sprayer, showing the exploded view of the main assembly and the optional hand spray assembly.

**Main Assembly Components:**

- Spout
- Spout Base
- P29248 Cartridge
- P38151 Screw
- P01317\* Handle
- P01308\* Handle Kit
- P38111 Set Screw
- P70421 Block
- P37142 O-ring
- P37144 O-ring
- P05134 1.5GPM Flow Regulator
- P05135 2.2GPM Flow Regulator
- P46470 Quick Connect
- P35296 Rubber Washer
- P35309 Metal Washer
- P36171 Mounting Nut

**Optional Hand Spray Assembly:**

- P51006\* Hand Spray (Note: hand spray includes aerator assembly)
- P05145\* Aerator Assembly

Model # LKEC2031  
P99358(Rev. date: 04/2022)